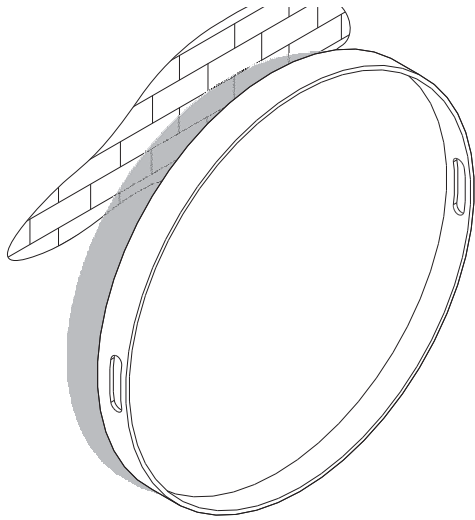


Ethnicraft

ASSEMBLY INSTRUCTION FOR TRAY INSTALLATION



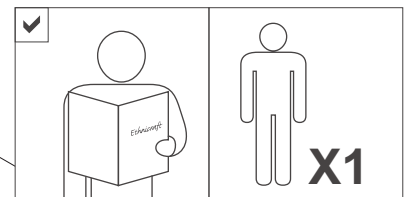
HARDWARE ENCLOSED

<p>METAL OVERHANGER (SMALL) 1 pc</p>	<p>ALU HANGER 1 pcs</p>
<p>WOOD SCREW 4 pcs</p>	<p>SCREW 2 pcs (not included in package)</p>
<p>WALL PLUG 2 pcs (not included in package)</p>	

TOOLS

<p>CROSS-HEAD SCREW DRIVER (not included in package)</p>	<p>PENCIL (not included in package)</p>
<p>DRILLING MACHINE (not included in package)</p>	<p>WATERPASS (not included in package)</p>

NOTICE

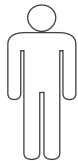


AS WALL MATERIALS VARY, SCREWS FOR FIXING TO WALL ARE NOT INCLUDED. FOR ADVICE ON SUITABLE SCREW SYSTEMS, CONTACT YOUR LOCAL SPECIALISED DEALER.

SYMBOLS



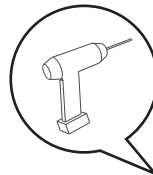
DIRECTION



NUMBER OF PERSON NEEDED



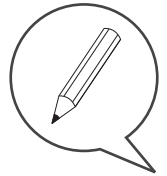
USE HAND



USE DRILLING MACHINE

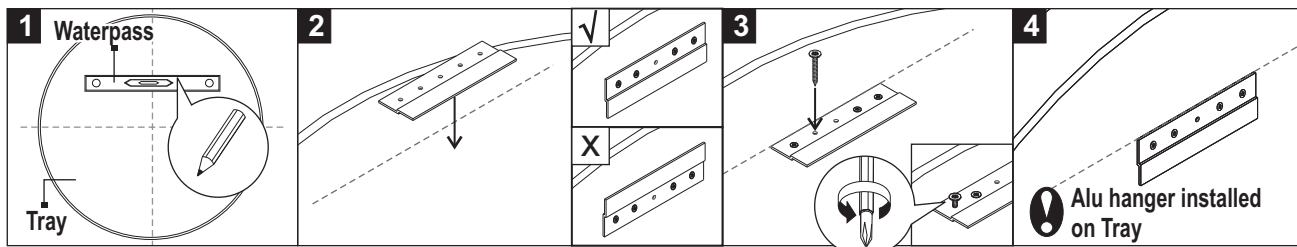


USE SCREW DRIVER TO TIGHTEN



USE PENCIL

INSTALLING ALU HANGER ON THE TRAY



HANGING ITEM WITH THE OVERHANGER

